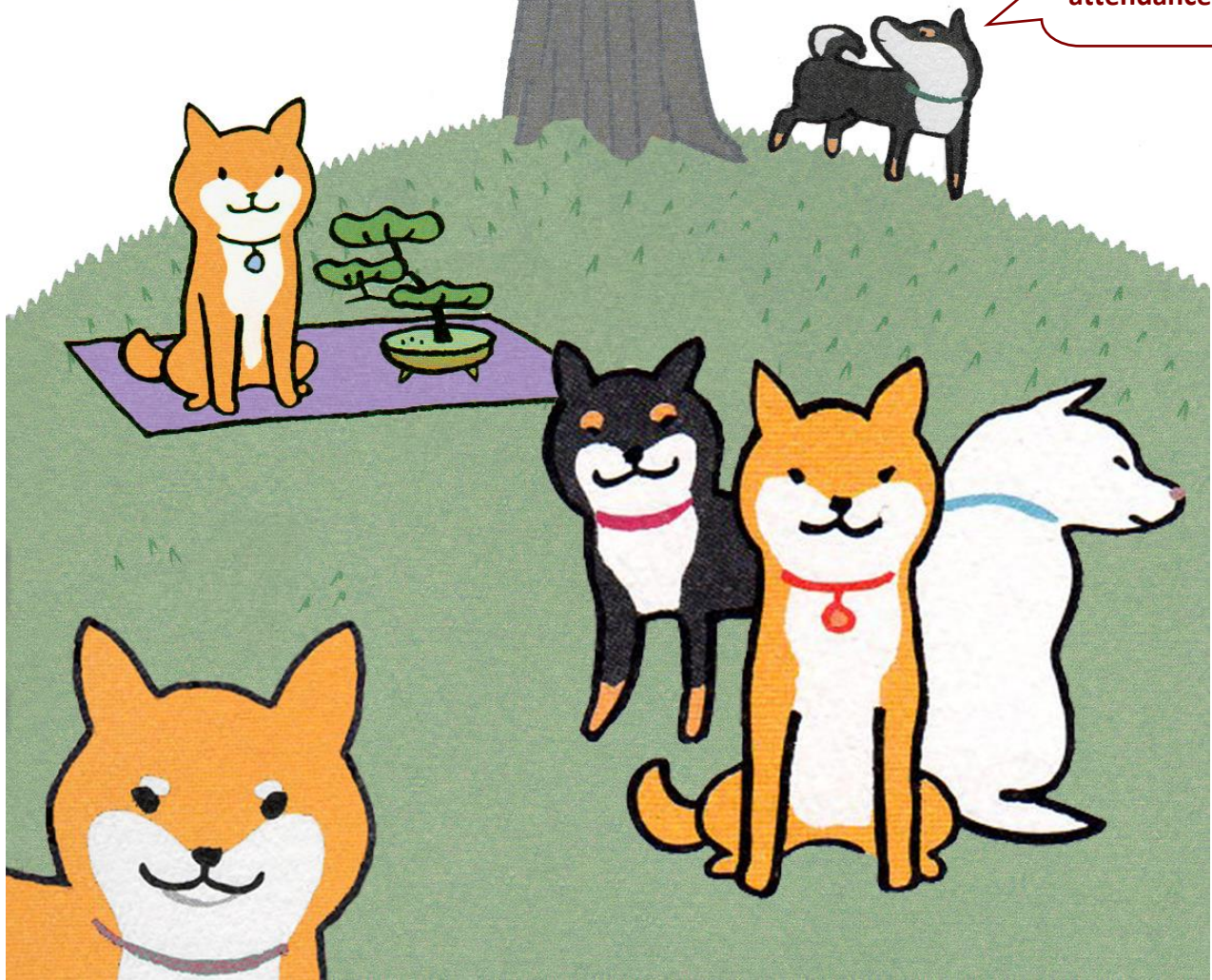


Shiba inu Fanciers of Northern California
28th Annual

Shiba Party

Over 100
Shibas in
attendance!



SUNDAY, June 3rd, 2018

10AM – 4PM

Orange Memorial Park

842 Memorial Drive, South San Francisco, CA

Sponsored by the
Shiba Inu Fanciers of Northern California

You don't need to have a Shiba to attend; it's open to all those with an interest in the breed. There is no better place to meet Shiba owners and their dogs, discuss stories and share your love for the breed!

Please RSVP Jacey Holden at JHOLDEN@JPS.NET

ESTIMATED SCHEDULE OF EVENTS:

- 10:00 MEET 'N GREET
- 11:00 TOY GRAB & NOSE WORK DEMO
- 12:00 POTLUCK LUNCH
- 1:00 GROUP PHOTO
- 1:15 RESCUE PARADE
- 1:30 SHIBA CONTESTS
- 2:30 RAFFLE/SILENT AUCTION

Shiba Contests

Be sure to sign-up for the contests when you check-in at registration table.
You can sign-up for as many contests as you want!

- **Tallest Shiba**
- **Shortest (Adult) Shiba**
- **Reddest Coat**
- **Tightest Tail**
- **Biggest Ears**
- **Most Out-Of-Coat**
- **Best Trick**
- **Best Food Catcher**
- **Best Costume**

There are **Special Awards** for the Shiba that made the **Longest Journey to Attend**, and for the **Oldest Shiba** in attendance.

Toy Grab - Numerous dog toys will be scattered around inside an exercise pen and your pooch has 30 seconds to grab a toy. Play more than once to get more toys!

Parade of Rescues - We would like to salute everyone who has opened their homes and their hearts to Shibas that have been rescued. We encourage everyone with their rescue and fostered Shibas to sign-up for the Rescue Parade.

Costume Contest – We look forward to seeing all of the fun, ingenious and wonderfully costumed Shibas. Definitely one of the highlights of the event for sure!

Potluck

With all the events going on we're sure to work up a good appetite. Be generous in your contributions, as there will be many people in attendance. Types of dishes to bring:

- Last Name starting with **A through M** - **Bring a side dish**
- Last Name starting with **N through Z** - **Bring a main dish**

Raffle/Silent Auction

The Raffle & Silent Auction are a chance to get some really great items. A portion of the raffle revenue goes to local Shiba Rescue groups. Baskets of goodies including toys, Shiba memorabilia, crates, leashes, and other doggie items will be available.

Anyone wishing to donate items to the raffle should email SFNCraffle@gmail.com.

Nose Work Demo

A free Nose Work demo will take place that allows you to learn how to read the subtle signals your dog communicates with when they are on the trail of a specific target scent.

Extras

All Shiba in attendance **MUST** be on a leash **AT ALL TIMES!** Please ask before petting any dogs at the event. Remember to bring a crate or exercise pen for your dog to relax in when you take a break. Also be sure to bring your own pop-up canopies, lawn chairs, blankets, and water bowls for your Shibas. Lastly, don't forget that we are guests of the park so please clean up after your pooch so that we can be invited back again next year!

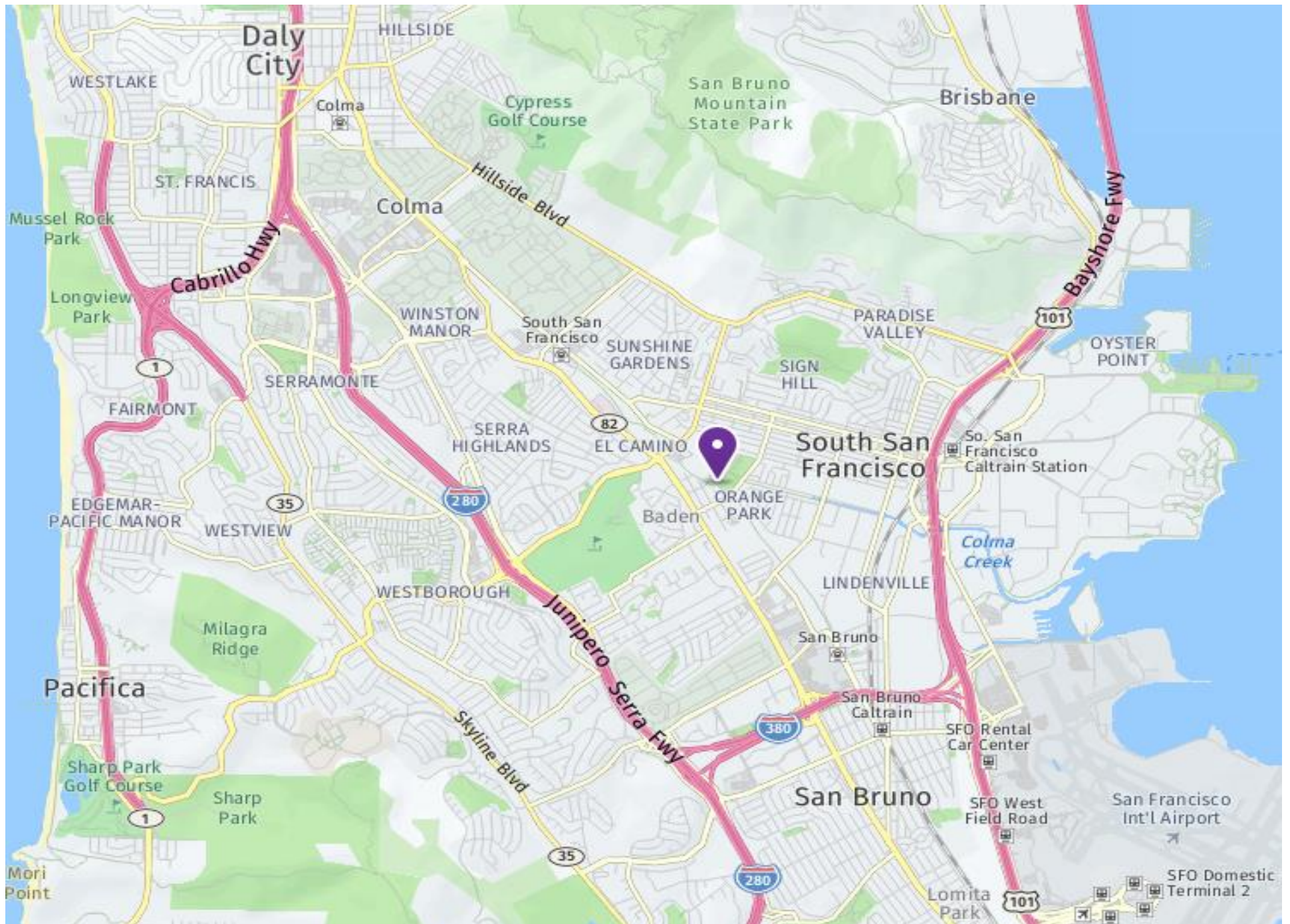
DIRECTIONS using US-101

- Take US-101 toward SFO International Airport
- Take exit for I-380 towards San Bruno
- Take Exit 5 for CA-82/El Camino Real heading North
- Continue north on CA-82/El Camino Real until you reach Orange Ave
- Turn **RIGHT** onto Orange Ave
- Turn **LEFT** onto Memorial Drive and park in the lot*

DIRECTIONS from SF/North Bay using I-280S

- Take I-280S toward San Jose
- Take Exit 45 for the Westborough Blvd exit and take a **LEFT** at the light
- Take a **Left** at the bottom of the offramp to turn on to Westborough Blvd
- Continue east on Westborough Blvd until CA-82/El Camino Real
- Turn **RIGHT** on CA-82/El Camino Real south
- Continue until you reach the first stop light which is Orange Ave
- Turn **LEFT** onto Orange Ave
- Turn **LEFT** onto Memorial Drive and park in the lot*

* If parking is full, go to the Public Parking Lot A at the Boys & Girls Club



Orange Memorial Park

