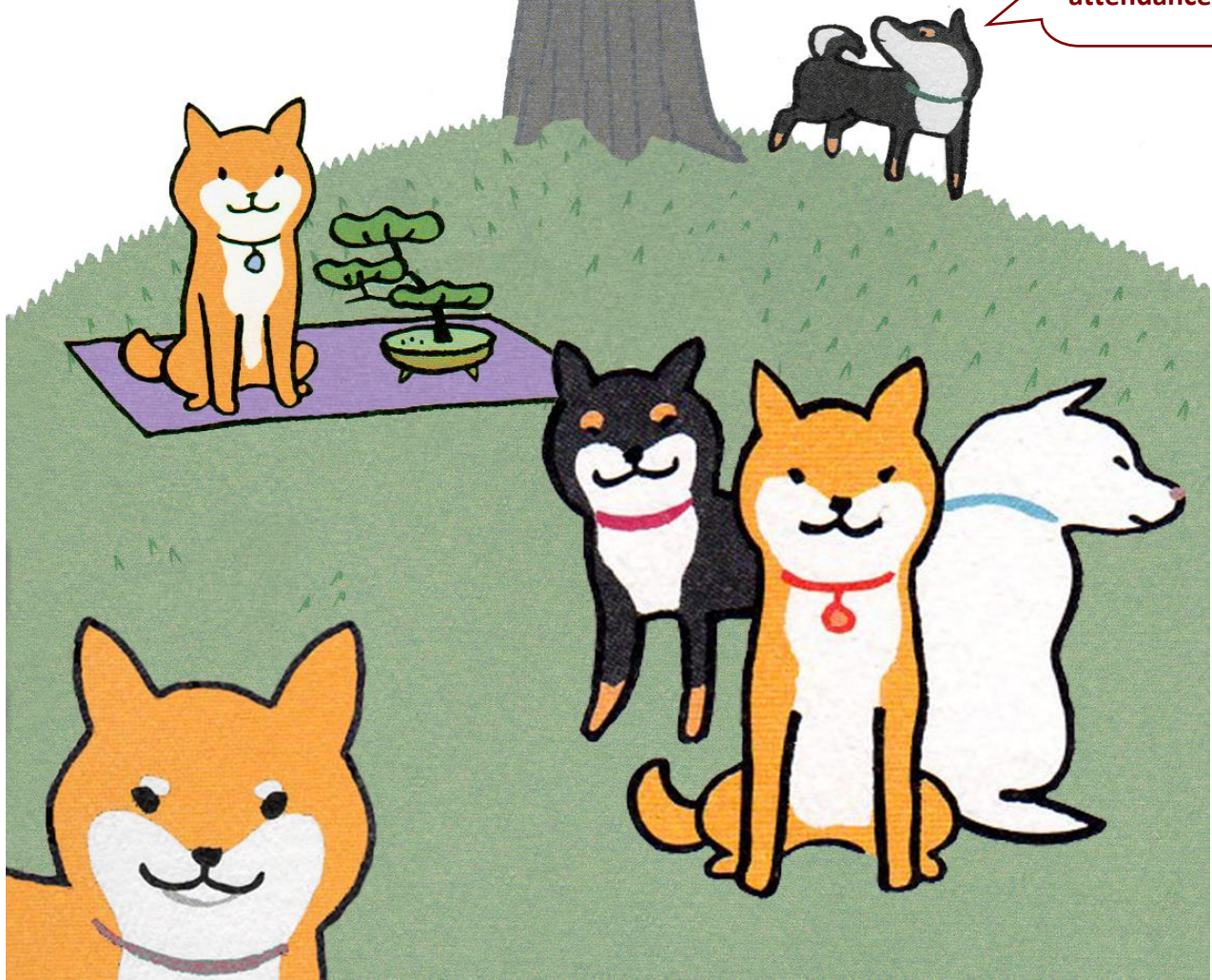


Shiba inu Fanciers of Northern California  
**29th Annual**

# Shiba Party

Over 100  
Shibas in  
attendance!



**SUNDAY, June 23rd, 2019**

10AM – 4PM

**Orange Memorial Park**

842 Memorial Drive, South San Francisco, CA

Sponsored by the  
***Shiba Inu Fanciers of Northern California***

You don't need to have a Shiba to attend; it's open to all those with an interest in the breed. There is no better place to meet Shiba owners and their dogs, discuss stories and share your love for the breed!

Please RSVP Jacey Holden at [JHOLDEN@JPS.NET](mailto:JHOLDEN@JPS.NET)

**ESTIMATED SCHEDULE OF EVENTS:**

- 10:00 MEET 'N GREET
- 11:00 TOY GRAB
- 12:00 POTLUCK LUNCH
- 1:00 GROUP PHOTO
- 1:15 RESCUE PARADE
- 1:30 SHIBA CONTESTS
- 2:30 RAFFLE/SILENT AUCTION

**Shiba Contests**

Be sure to sign-up for the contests when you check-in at registration table.  
You can sign-up for as many contests as you want!

- **Tallest Shiba**
- **Shortest (Adult) Shiba**
- **Reddest Coat**
- **Tightest Tail**
- **Biggest Ears**
- **Most Out-Of-Coat**
- **Best Trick**
- **Best Food Catcher**
- **Best Costume**

There are **Special Awards** for the Shiba that made the **Longest Journey to Attend**, and for the **Oldest Shiba** in attendance.

**Toy Grab** - Numerous dog toys will be scattered around inside an exercise pen and your pooch has 30 seconds to grab a toy. Play more than once to get more toys!

**Parade of Rescues** - We would like to salute everyone who has opened their homes and their hearts to Shibas that have been rescued. We encourage everyone with their rescue and fostered Shibas to sign-up for the Rescue Parade.

**Costume Contest** – We look forward to seeing all of the fun, ingenious and wonderfully costumed Shibas. Definitely one of the highlights of the event for sure!

## **Potluck**

With all the events going on we're sure to work up a good appetite. Be generous in your contributions, as there will be many people in attendance. Types of dishes to bring:

- Last Name starting with **A through M** - **Bring a main dish**
- Last Name starting with **N through Z** - **Bring a side dish**

## **Raffle/Silent Auction**

The Raffle & Silent Auction are a chance to get some really great items. A portion of the raffle revenue goes to local Shiba Rescue groups. Baskets of goodies including toys, Shiba memorabilia, crates, leashes, and other doggie items will be available.

Anyone wishing to donate items to the raffle should email [SFNCraffle@gmail.com](mailto:SFNCraffle@gmail.com).

## **Nose Work Demo**

A free Nose Work demo will take place that allows you to learn how to read the subtle signals your dog communicates with when they are on the trail of a specific target scent.

## **Extras**

All Shiba in attendance MUST be on a leash AT ALL TIMES! Please ask before petting any dogs at the event. Remember to bring a crate or exercise pen for your dog to relax in when you take a break. Also be sure to bring your own pop-up canopies, lawn chairs, blankets, and water bowls for your Shibas. Lastly, don't forget that we are guests of the park so please clean up after your pooch so that we can be invited back again next year!

## **DIRECTIONS using US-101**

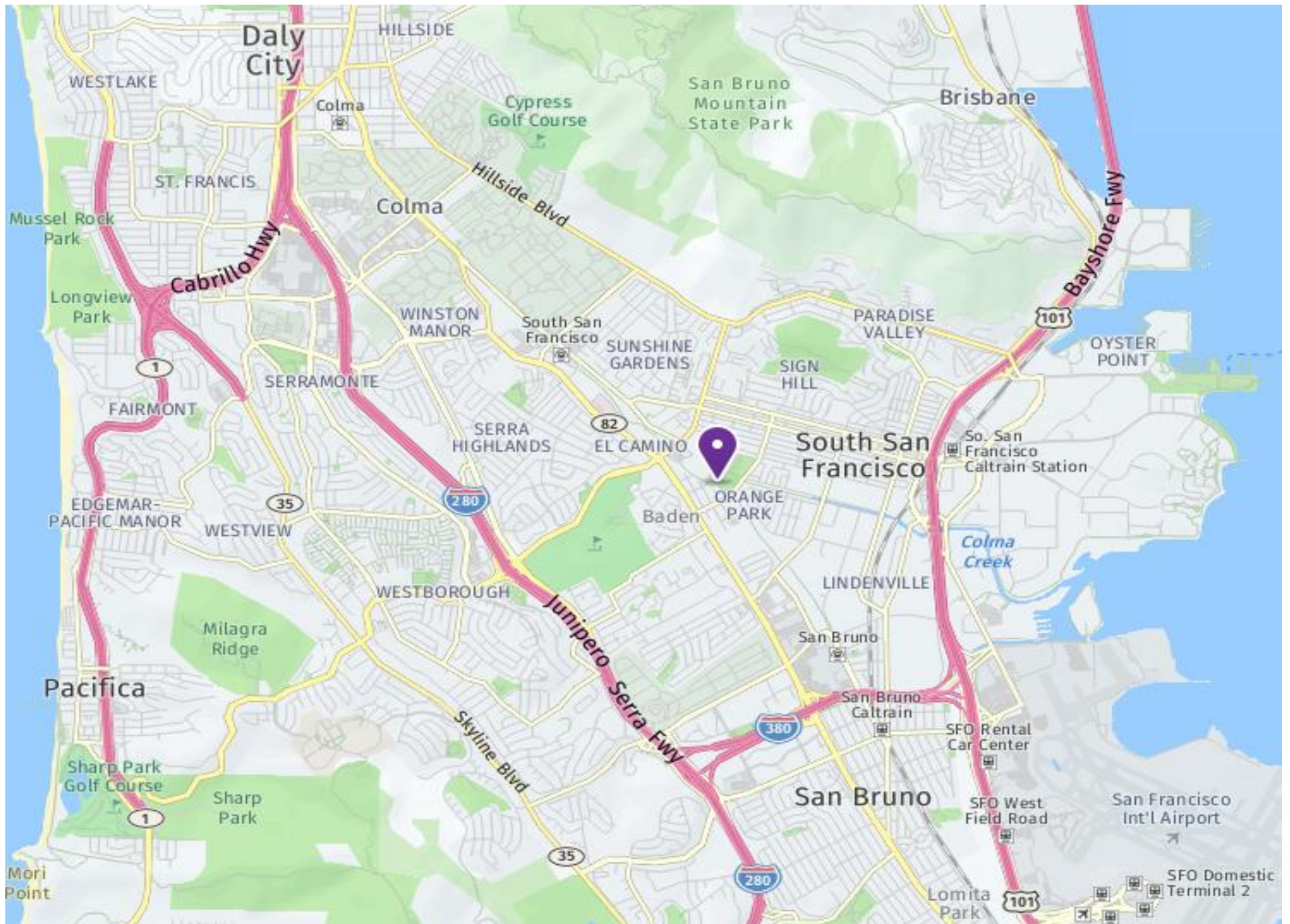
- Take US-101 toward SFO International Airport
- Take exit for I-380 towards San Bruno
- Take Exit 5 for CA-82/El Camino Real heading North
- Continue north on CA-82/El Camino Real until you reach Orange Ave
- Turn RIGHT onto Orange Ave
- Turn LEFT onto Memorial Drive and park in the lot\*

## **DIRECTIONS from SF/North Bay using I-280S**

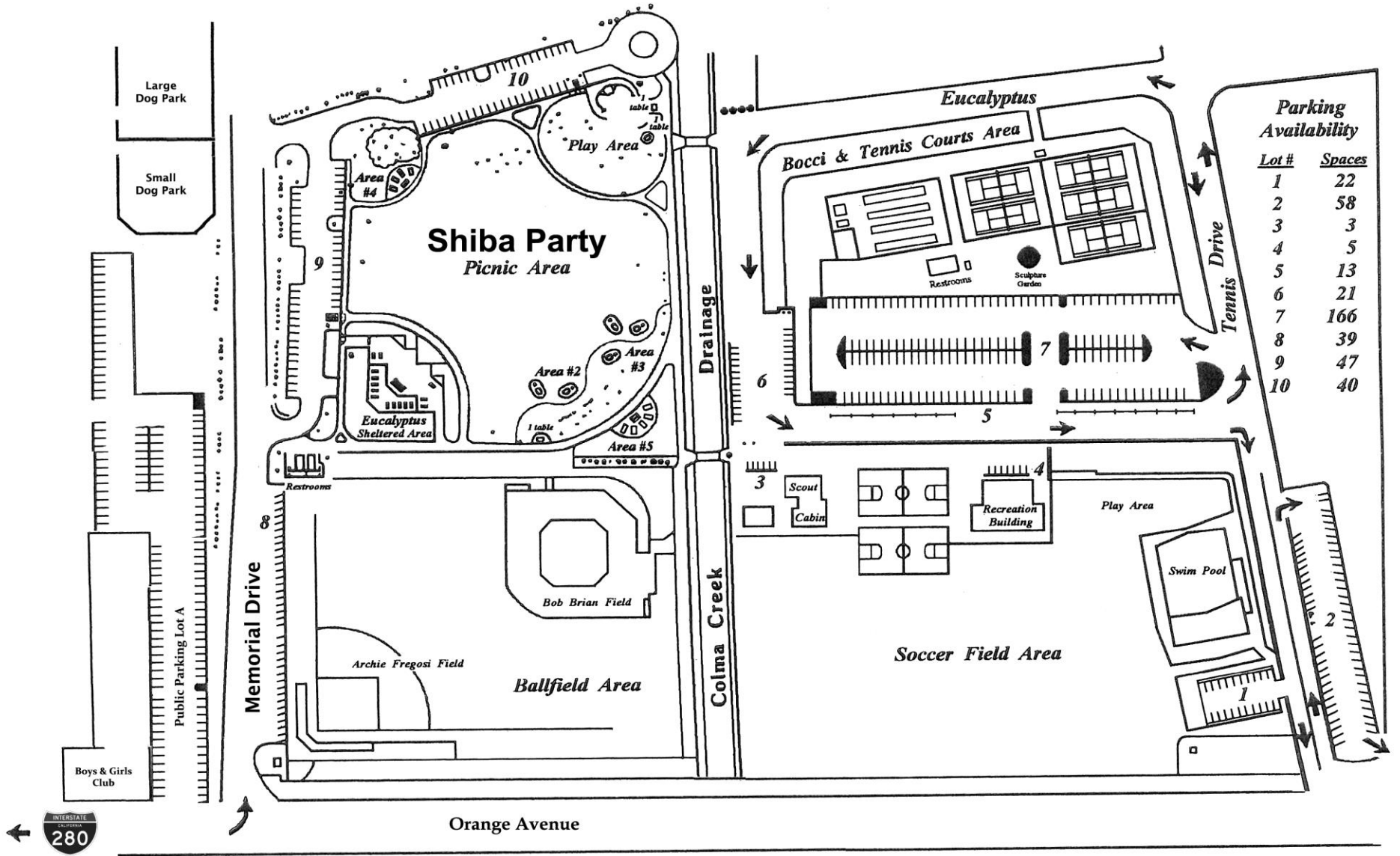
- Take I-280S toward San Jose
- Take Exit 45 for the Westborough Blvd exit and take a LEFT at the light
- Take a Left at the bottom of the offramp to turn on to Westborough Blvd
- Continue east on Westborough Blvd until CA-82/El Camino Real
- Turn RIGHT on CA-82/El Camino Real south
- Continue until you reach the first stop light which is Orange Ave
- Turn LEFT onto Orange Ave
- Turn LEFT onto Memorial Drive and park in the lot\*

\* If parking is full, go to the Public Parking Lot A at the Boys & Girls Club





# Orange Memorial Park



**Parking Availability**

Lot #	Spaces
1	22
2	58
3	3
4	5
5	13
6	21
7	166
8	39
9	47
10	40